

Product Spotlight

WWD's FEATURED PRODUCT:



Geoprobe Systems® has a new truck-mounted probe, the **Model 7800**. Its newly-designed, ergonomically-positioned control panel has an advanced integrated diagnostics system.

The 7800 features an overhead mast and winch, Geoprobe's GH64 percussion hammer, GA4000 auger head, an ASTM standard automatic drop hammer system DH103, and is powered by a Kubota four-cylinder turbo diesel 58-horsepower liquid-cooled engine. The probe unit provides lateral extend and oscillatory movements, and sits on a slide base frame rail system for easy fold up.

For links to these Web sites & more, visit worldwidedrillingresource.com

Check Corporation manufactures custom-fit, aftermarket automotive seat heaters. Kits are of the highest quality and exceed original equipment specifications.

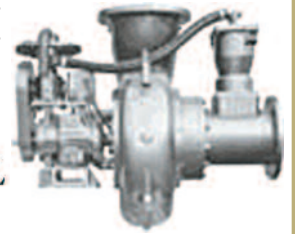
Seat covers are easily removed and heating elements are adhered to the seat base foam. Each seat heater is individually fused and safely wired into the vehicle's electrical system. Seat heaters can be installed in most vehicles. Do it yourself or use a certified installer.



Cornell Pump Company's Redi-Prime dry-prime pumps come in 1.25" to 30" discharge sizes.

Features include fully automatic, self-priming, dry-prime pump; rapidly primes and reprimers completely unattended; environmentally-safe priming system designed to prevent product leakage; handles large solids; high suction lift capability up to 28 feet.

Redi-Prime pumps have a two-year warranty, heavy-walled castings, replaceable wear rings and shaft sleeves, and bearing life of 100,000 hours or more.



Throop Rock Bit Company

PO BOX 416 TONKAWA, OK. USA
PH-580-628-3416 FAX: 580-628-2703
EMAIL: SALES@THROOPROCKBIT.COM
WWW.THROOPROCKBIT.COM

